



**4U Rackmount Chassis with 5 Drive Bays,  
Retaining bar for 14-slot Backplane or ATX  
Motherboard, Supports PS/2 Size PSU**

- Circuit Card Hold Down Bar
- Inter-changeable Rear Plate
- Supports PS/2 size Power Supply
- Internal Bracket for (1) 3.5" Drive
- Two Ball Bearing Fans
- Brackets for (3) 5.25" and (1) 3.5" Drive
- Front Door Latch



### Introduction

The **RCK-405** 4U Rackmount Chassis provides a cost effective solution for a variety of Industrial applications. It is easily configurable to support either an ATX Motherboard or a 14-slot PICMG backplane by simply changing the rear panel. The **RCK-405** can support up to five shock resistant drives (3-5.25"/1-FDD/1-HDD) and a retaining bar is included to hold expansion cards in place for those applications which encounter a high level of vibration. Both AT and ATX PS/2 size Power Supplies are supported by the **RCK-405** for any applications with unique power requirements.

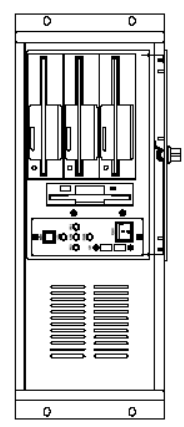
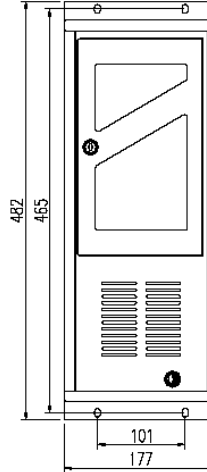
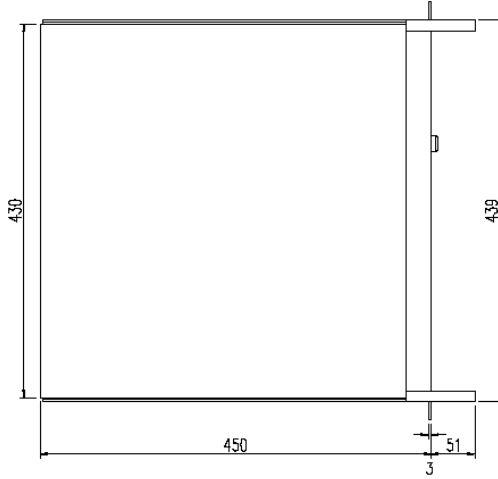
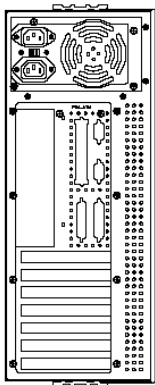
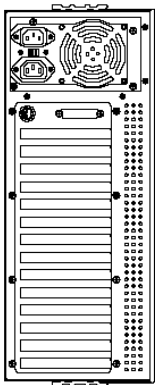
### Features

- 4U 19" Rackmount Chassis
- Front Panel with Lockable Door to Protect Drives
- (2) 3.5" and (3) 5.25" Drive Bays
- (2) Front USB 2.0 Ports (optional)
- Changeable rear I/O shield
- Anti Vibration Card Clamp
- Motherboard or Backplane Support

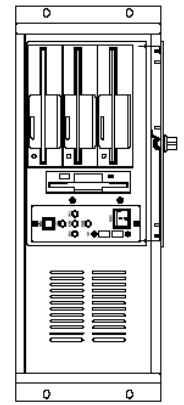
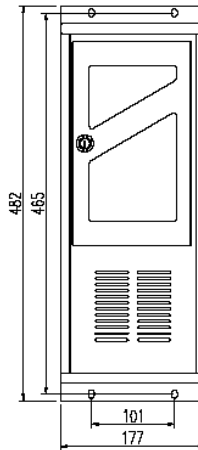
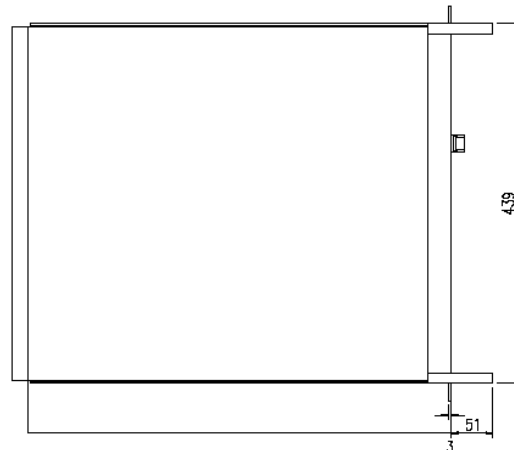
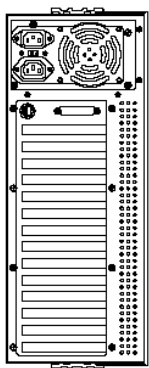
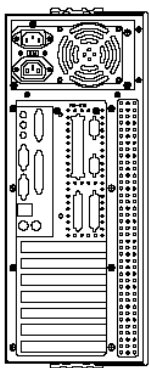
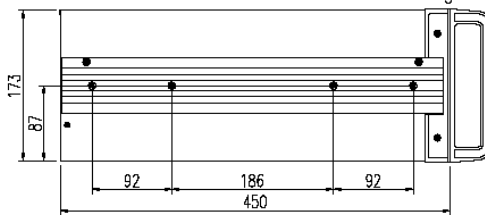




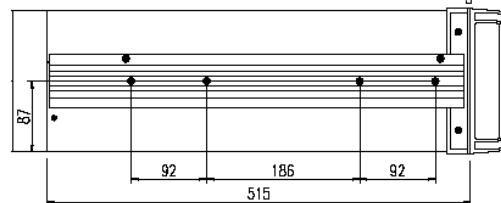
## Mechanical Drawing



**RCK-405B/405M**



**RCK-405ME/405BE**





### Construction

- Heavy duty steel with Ni plating

### Color

- Black/Beige

### Board Support

- Backplane (405B)/ ATX Motherboard (405M)/  
Extended ATX Motherboard (405ME)

### Drive Bays

- (3) 5.25" + (1) 3.5" external drives and (1)  
3.5" internal drives

### Expansion

- Depends on backplane or motherboard

### Power Supply

- ATX power supply/ Mini-Redundant Power

### Cooling System

- One 12 cm and one 8 cm ball bearing fans with  
replaceable air filter

### Ports

- One front panel connector for keyboard
- Optional (2) USB ports on front panel

### Switches

- On/Off Switch and Reset Switch

### Indicators

- Power ON/OFF LED
- (6) HDD Active LED

### Dimensions

- RCK-405M/405B:  
449(W) x 450(D) x 177(H) mm  
17.7(W) x 17.7(D) x 7(H) inches
- RCK-405ME/405BE:  
449(W) x 514(D) x 177(H) mm  
17.7(W) x 20.2(D) x 7(H) inches

### Operating Temperature

- 0~55 °C

### Gross Weight

- RCK-405M/405B: 13.8Kgs/30.4lbs
- RCK-405ME/405BE: 17Kgs/37.4lbs

### Ordering Information

<b>RCK-405B</b>	4U Rackmount chassis, with (3) 5.25" and (2) 3.5" drive bays for 14/15-slot Backplane
<b>RCK-405BE</b>	4U Rackmount chassis, with (3) 5.25" and (2) 3.5" drive bays for 14/15-slot Backplane
<b>RCK-405M</b>	4U Rackmount chassis, with (3) 5.25" and (2) 3.5" drive bays for ATX motherboard
<b>RCK-405ME</b>	4U Rackmount chassis, with (3) 5.25" and (2) 3.5" drive bays for ATX / <b>Extended ATX motherboard</b>
<b>MT-PL01</b>	Optional back plate for RCK-405M/RCK-405ME with 2 fans