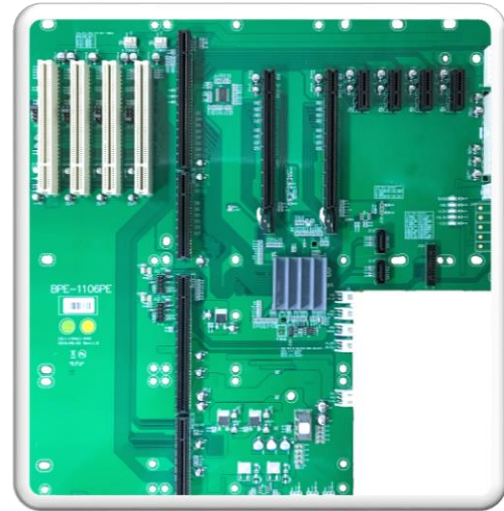




Industrial PICMG 1.3 bridged backplane with (2) PCIe x8 slots, (4) PCIe x1 slots and (4) PCI slots



Features

- Supports PICMG 1.3 Single board computers
- Power Indicator LEDs
- Multilayer PCB

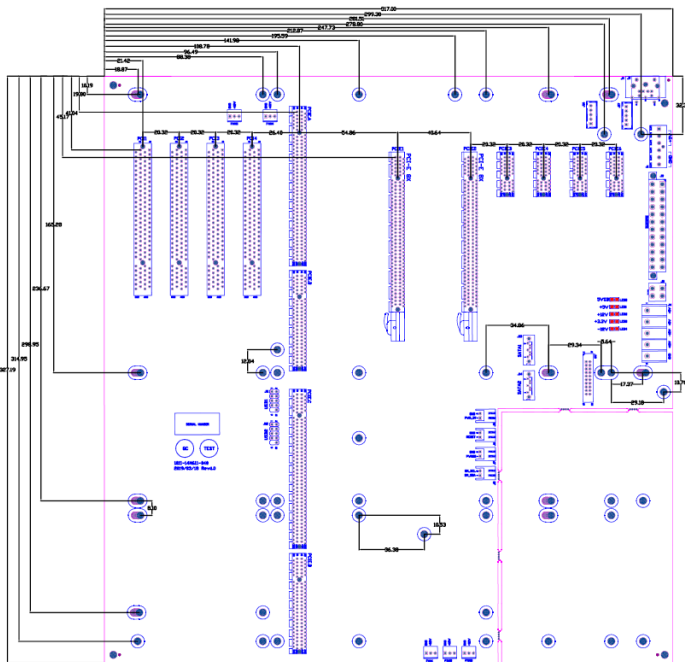
PCI Express Slot

- (2) PCIe x8 with x16 slots
- (4) PCIe x1

PCI Slot

- (4) PCI 32-bit 5V slots

Mechanical Drawing



Environment Spec

- -10 ~ 60°C operation temperature
- Operation humidity under 10% ~ 80%

Dimension

- 327mm x 317mm x 1.6mm

Ordering Information

BPE-1106PE 13-Slot PICMG 1.3 Backplane with (2) PCIe x8, (4) PCIe x1 and (4) PCI slots, Supports ATX 24P power connector, with cutting edge