

# **RCK-203BE**

## **Rackmount Chassis**

### **User Manual**



## Copyright Notice

---

This document and product is copyrighted, January 2014, by AICSYS, Inc. All rights are reserved. No part of this manual may be reproduced, copied, or translated without prior notice to AICSYS, Inc.

RCK-203BE is trademark of AICSYS, Inc.

### Disclaimer:

Specification and information contained in this manual are provided for reference only. We do not assume any responsibility arising out of the application of the products. This manual is subject to change without any notice.

January 2014



# Table of Contents

---

<b>Chapter 1 Getting Started .....</b>	<b>4</b>
General Information.....	4
Product Specification.....	4
Packing Checklist .....	4
Recommended Tools .....	5
Recommended Working Environment .....	5
Chassis Mechanical Drawing.....	5
<b>Chapter 2 Installation Guide .....</b>	<b>6</b>
Unpacking the Chassis.....	6
Removing the top cover .....	6
Installing the Power Supply Unit.....	7
Installing the Hard Disk Drive .....	7
Installing the Backplane .....	8
Installing the CPU Card .....	8
<b>Appendix A Power Supply Unit .....</b>	<b>9</b>
<b>Appendix B Motherboard.....</b>	<b>9</b>

# Chapter 1 Getting Started

## General Information

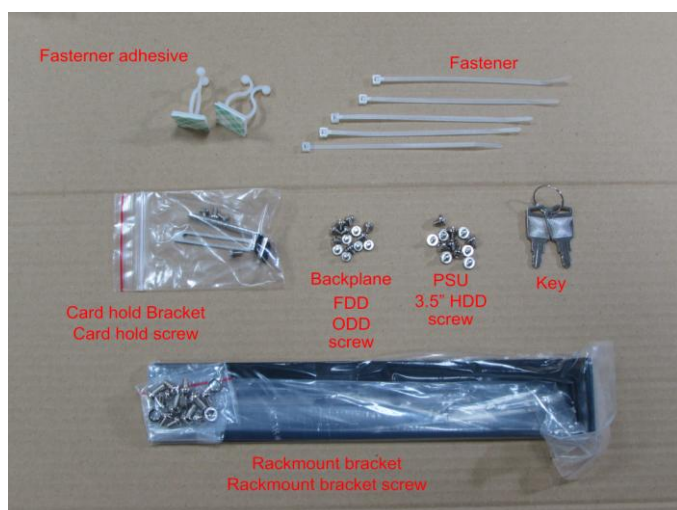
The RCK-203BE Rackmount chassis supports full-size SBC through 2U PICMG1.0/ 1.3 butterfly backplanes, and (1) 5.25", (1) 3.5" external drives, and (1) 3.5" internal drive. The chassis has (2) 80mm high-speed ball-bearing fans, and supports PS2 power supply.

## Product Specification

Construction	Heavy-duty steel
Drive bay	(1) 5.25", (1) 3.5" external drives, and (1) 3.5" internal drive
Cooling fan	(2) 80mm high-speed ball-bearing fans
Switch	On/Off switch and Reset switch
Indicator	Power On/Off, HDD activity LEDs
I/O	(2) USB and (1) PS/2
Expansion	5 x full-height expansion slots PICMG 1.0 / 1.3 backplanes with PCI or PCIe slot expansion (refer to Appendix B)
Dimension (W x D x H)	434 x 450 x 88 mm; 17 x 17.7 x 3.5 inches
Weight	NW: 7.4kg / GW: 10.2kg

## Packing Checklist

2 x Rackmount bracket	2 x Fastener adhesive
8 x Rackmount bracket screw set	5 x Fastener
24 x Backplane & FDD & ODD screw	12 x PSU & 3.5" HDD screw
2 x Card hold Bracket	4 x Card hold screw
2 x Key	



## Recommended Tools

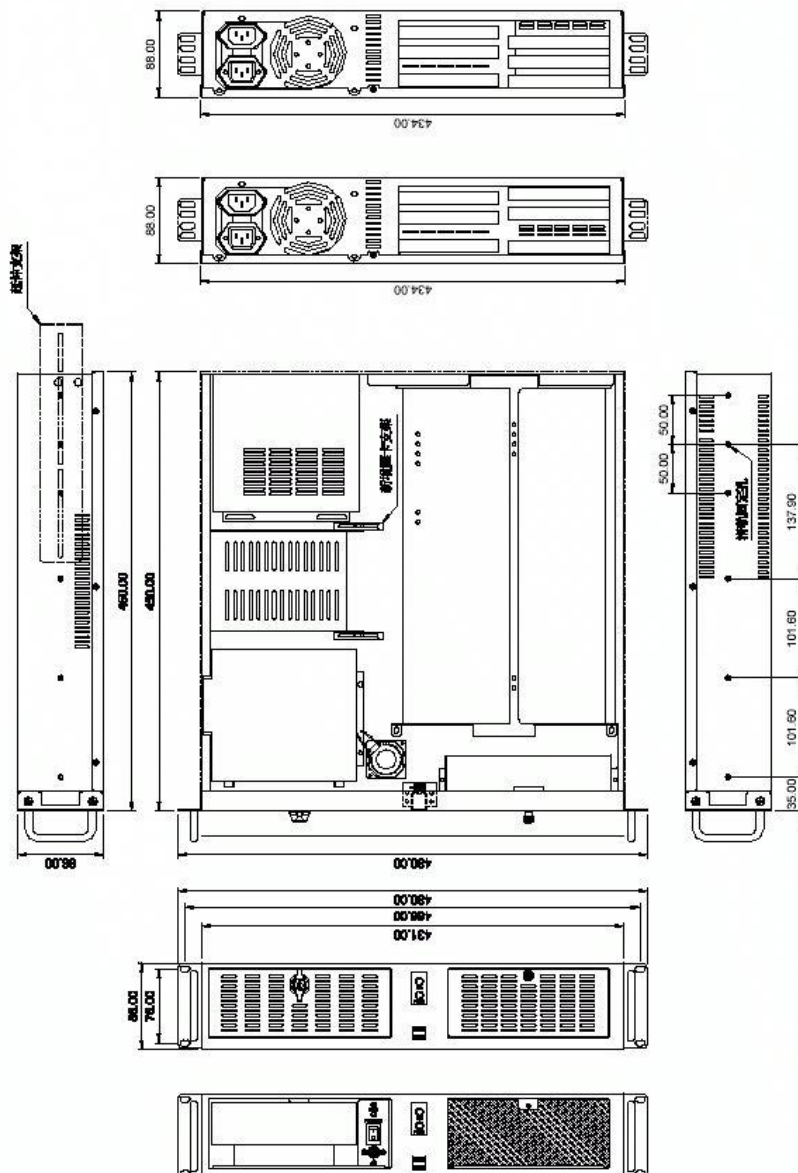
- Philips Head Screwdriver
- Flat Head Screwdriver
- Forceps (for pulling out jumpers and screws)

## Recommended Working Environment

A flat anti-static work surface is required when assembling a complete system

## Chassis Mechanical Drawing

Drawing with dimension in millimeter:



## Chapter 2 Installation Guide

### Unpacking the Chassis

The RCK-203BE is shipped in a plastic bag that is placed inside a cardboard box. The accessories are also shipped with the chassis. When you unpack the chassis you must:

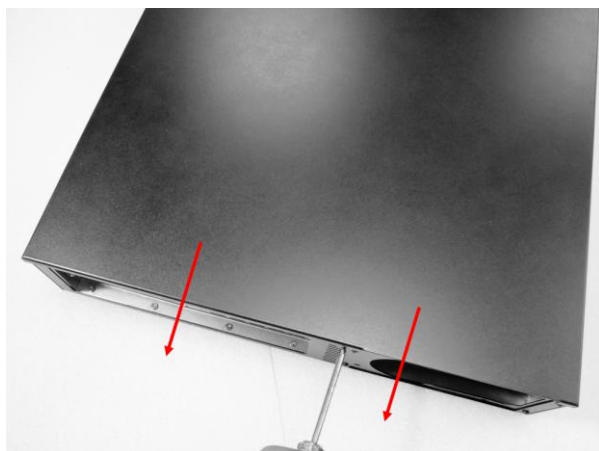
- Make sure all the accessories and components listed above are present.
- Make sure the chassis has not been damaged in anyway. The installation steps outlined above are described in details below. Please refer to the relevant section(s).



### Removing the top cover

The top cover is secured by a total of seven screws (three on each side and one on rear side). To remove the top cover, please follow the steps below:

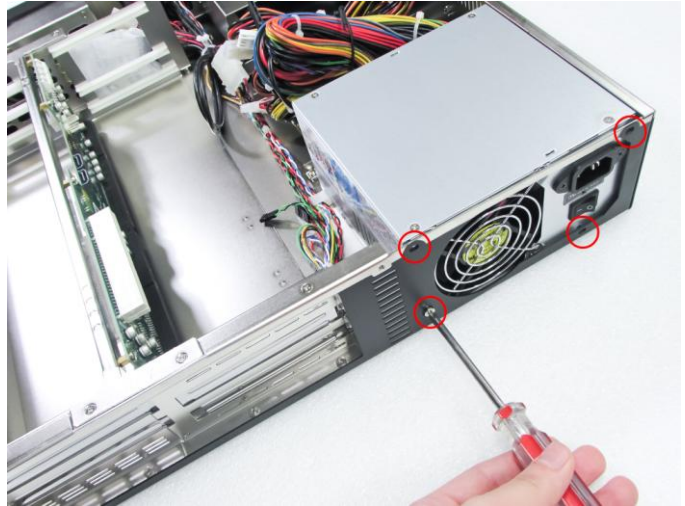
1. Remove all seven top cover retention screws
2. Slide the cover toward rear of the chassis, then lift the cover off the chassis



## Installing the Power Supply Unit

Once the top cover have been removed, a user supplied PSU can be installed. The PSU is installed at the rear of the chassis and secured to the chassis with four retention screws. To install the PSU, please follow the steps below:

1. Correctly position the PSU at the rear of the chassis with the power switch and cable socket both facing outwards. Secure the PSU by inserting four retention screws through the rear of the chassis



- Compatible Power Supply Unit models are available in Appendix A.

## Installing the Hard Disk Drive

The RCK-203BE chassis supports one 5.25" and one 3.5" external drives bays. To install the drives, please follow the steps outlined in the sections below.

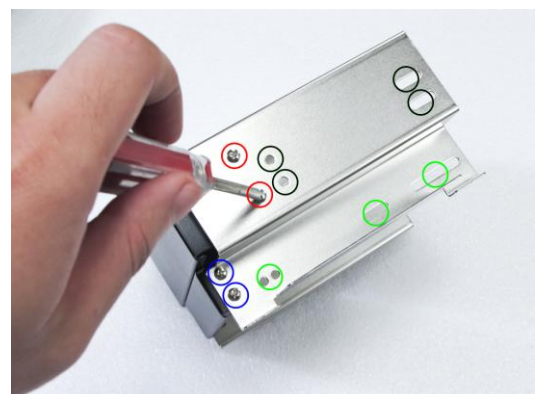
1. Remove the four screws and pull upside to remove the HDD bracket from the chassis



2. For installing 3.5" drive, remove the four retention screws for each bay as indicated by blue circles. Then insert the drive and secure retention screws as indicated by green circles

3. For installing 5.25" drive, remove the four retention screws for each bay as indicated by red circles. Then insert the drive and secure retention screws as indicated by black circles.

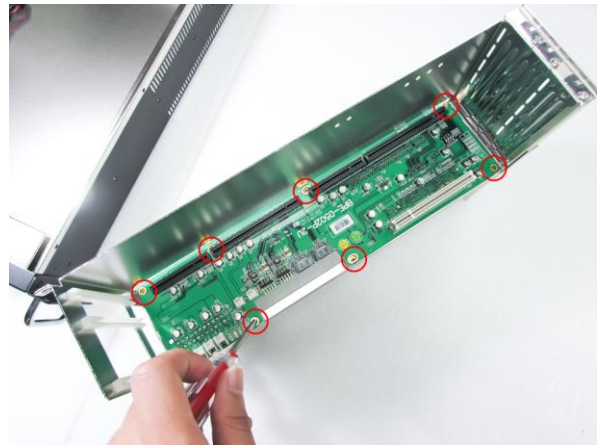
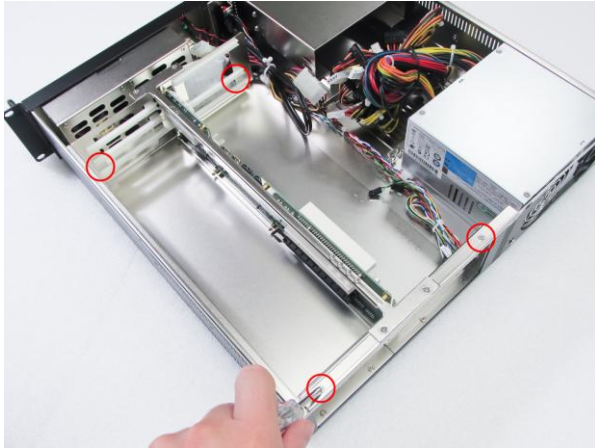
4. After the 5.25" or 3.5" drives assembled to the bracket, place back to the chassis, and secure with crews.



## Installing the Backplane

To install the backplane please follow the instructions below:

1. Remove the four screws securing the backplane bracket and pull upside to remove from the chassis
2. Place the backplane to the bracket, and insert the screw to secure the backplane to the bracket

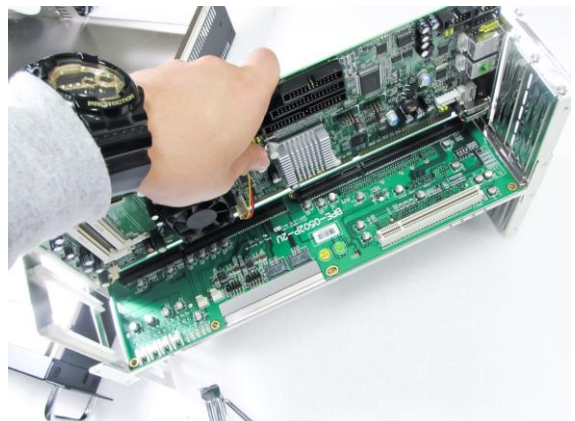
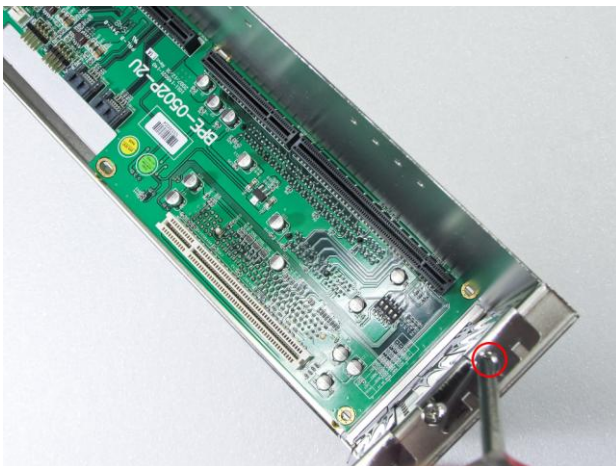


- Different backplane may have different Screw hole positions, please refer to their own User manual for details.
- Compatible backplane models are available in Appendix B.

## Installing the CPU Card

To install the CPU Card please follow the instructions below:

1. Remove the rear I/O slot bracket by removing the screw
2. Insert the CPU Card to the backplane socket and secure with original screw from I/O slot bracket



3. Place the backplane bracket with CPU card inside back to the chassis, and secure with four screws



- Please make sure to disconnect the Power Supply before installing the CPU Card.
- Do not turn on power during the CPU card installation
- Electrostatic Discharge (ESD) can damage electronic components. To prevent damage to your system, use a grounded wrist strap designed to prevent static discharge

## Appendix A Power Supply Unit

Compatible Power Supply Units are listed in the table below:

Model number	Wattage	Type	Dimension (W x H x L)
SS-400ES	400W	Single output	150 x 140 x 86mm
SS-600ES	600W	Single output	150 x 140 x 86mm

## Appendix B Motherboard

Compatible AICSYS motherboards are listed in the table below:

Model number	Type	PCI	PCIe	ISA
BP-0602P-2U	Full-size PICMG 1.0 Backplanes	2	N/A	2
BP-0604P-2U	Full-size PICMG 1.0 Backplanes	4	N/A	N/A
BPE-0502P-2U	Full-size PICMG 1.3 Backplanes	2	2	N/A
BPE-0605E-2U	Full-size PICMG 1.3 Backplanes	N/A	5	N/A

**The Global Choice for  
Premium Industrial Computer Products**

[www.aicsys.com](http://www.aicsys.com)

