

WMC-402M

Wallmount Chassis

User Manual



Copyright Notice

This document and product is copyrighted, January 2014, by AICSYS, Inc. All rights are reserved. No part of this manual may be reproduced, copied, or translated without prior notice to AICSYS, Inc.

WMC-402M is trademark of AICSYS, Inc.

Disclaimer:

Specification and information contained in this manual are provided for reference only. We do not assume any responsibility arising out of the application of the products. This manual is subject to change without any notice.

January 2014



Table of Contents

Chapter 1 Getting Started	4
General Information.....	4
Product Specification.....	4
Packing Checklist	4
Recommended Tools	5
Recommended Working Environment	5
Chassis Mechanical Drawing.....	5
Chapter 2 Installation Guide	6
Unpacking the Chassis.....	6
Removing the top cover and hold-down clamp.....	6
Installing the Power Supply Unit.....	7
Installing the motherboard	9
Installing the Expansion Card.....	9
Appendix A Power Supply Unit	11
Appendix B motherboard.....	11
Appendix C Exploded Diagram	12

Chapter 1 Getting Started

General Information

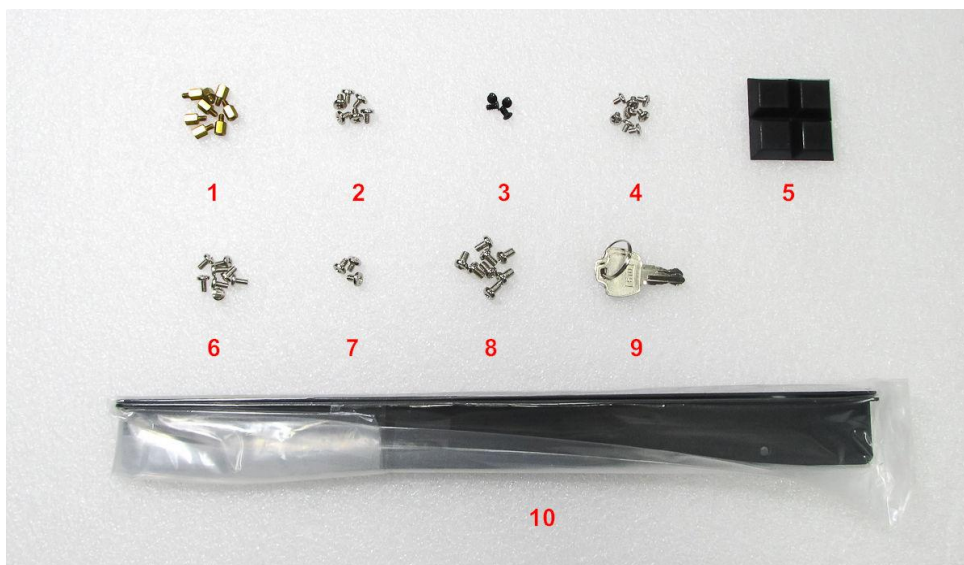
The WMC-402M Wallmount chassis supports MicroATX motherboard, 1x 5.25" external drive bay, 1x 3.5" internal drive bay, and additional space for 1x 3.5" internal drive. The chassis has 1x 8cm fan and supports SFX ATX power supply.

Product Specification

Construction	Heavy-duty steel
Drive bay	1 x 5.25" external drive bay, 1 x 3.5" internal drive bay, and additional space for 1 x 3.5" internal drive
Cooling fan	1 x 8cm ball-bearing fan
Switch	On/Off switch and Reset switch
Indicator	Power On/Off and HDD Activity LEDs
Expansion	4 x expansion slots
Dimension (W x D x H)	337 x 339.8 x 136 mm / 13.3 x 13.4 x 5.4 inches
Gross Weight	8kg / 17.7lbs

Packing Checklist

No	Item	No	Item
1	8 x Standoff	6	8 x Motherboard Screw
2	6 x HDD Screw	7	3 x PSU Screw
3	4 x HDD Screw	8	8 x Wall mounted Screw
4	8 x CD-ROM	9	1 x Key
5	4 x Foot stand	10	2 x Wallmount bracket



Recommended Tools

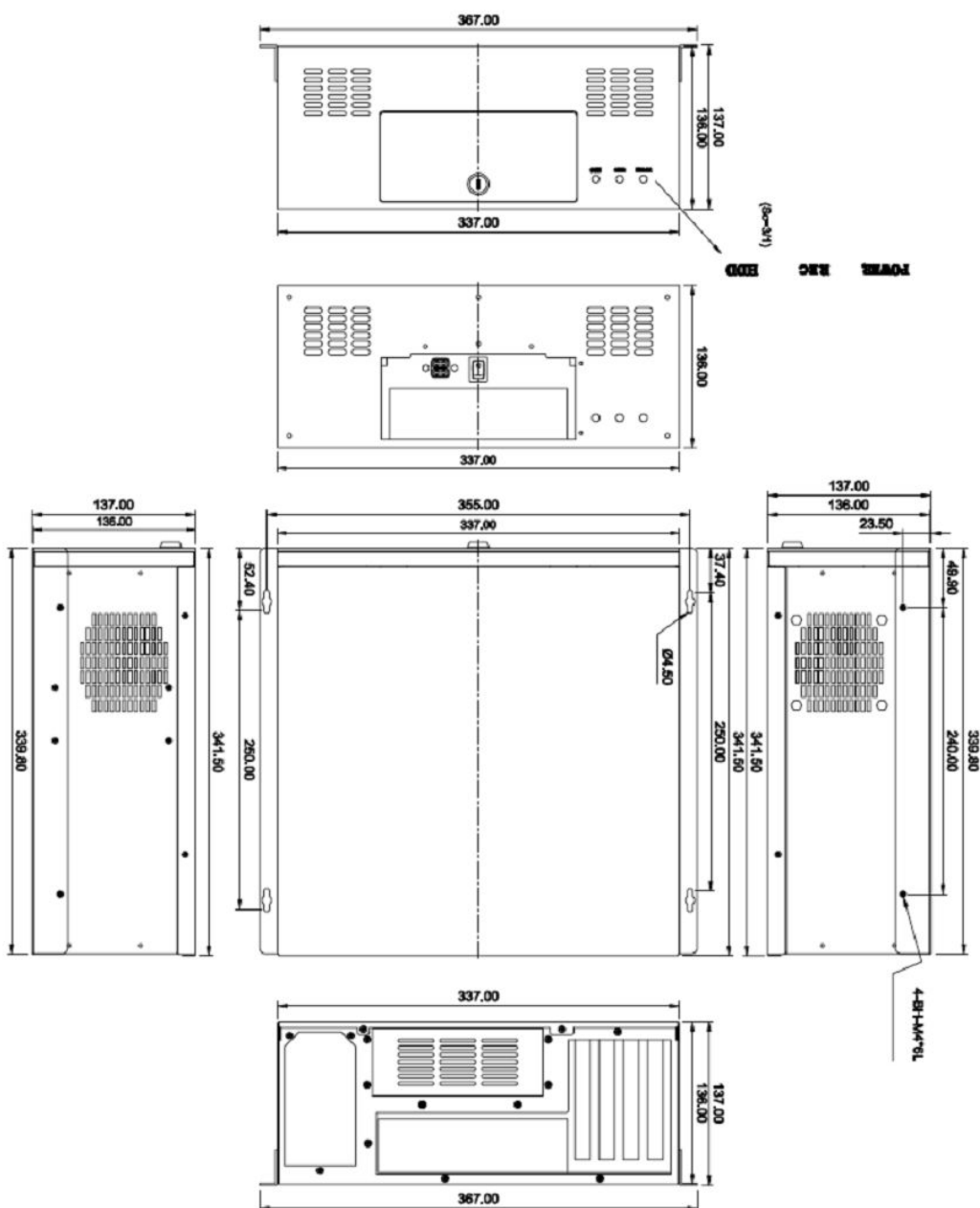
- Philips Head Screwdriver
- Flat Head Screwdriver
- Forceps (for pulling out jumpers and screws)

Recommended Working Environment

A flat anti-static work surface is required when assembling a complete system

Chassis Mechanical Drawing

Drawing with dimension in millimeter:



Chapter 2 Installation Guide

Unpacking the Chassis

The WMC-402M is shipped in a plastic bag that is placed inside a cardboard box. The accessories are also shipped with the chassis. When you unpack the chassis you must:

- Make sure all the accessories and components listed above are present.
- Make sure the chassis has not been damaged in anyway. The installation steps outlined above are described in detail below. Please refer to the relevant section(s).

Removing the top cover and hold-down clamp

The top cover is secured by a total of six screws (two on each side and two on rear side of the chassis). To remove the top cover, please follow the steps below:

1. Remove all six top cover retention screws



2. Slide the cover toward rear of the chassis, then lift the cover off the chassis



Installing the Power Supply Unit

Once the top cover have been removed, a user supplied PSU can be installed. The PSU is installed at the rear of the chassis and secured to the chassis with three retention screws.

To install the PSU, please follow the steps below:

1. Correctly position the PSU at the rear of the chassis with the power switch and cable socket both facing outwards. Secure the PSU by inserting three retention screws through the rear of the chassis

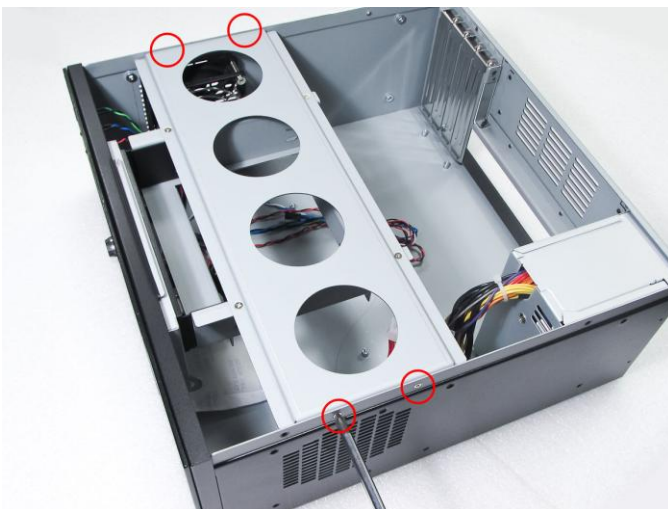


- Compatible Power Supply Unit models are available in Appendix A.

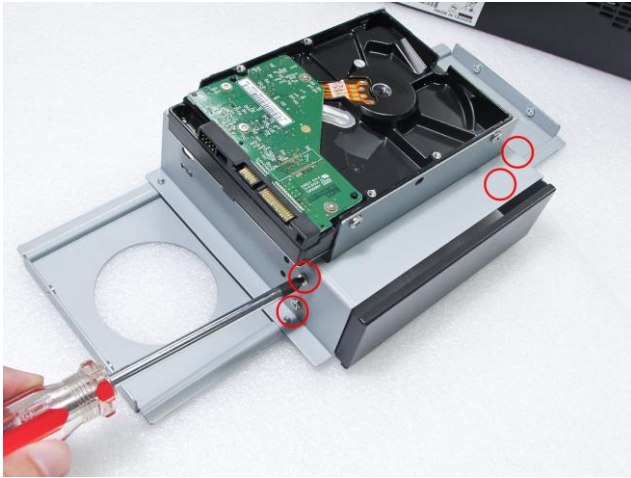
Installing the Hard Disk Drive

The WMC-402M chassis supports one 3.5" internal drive bay, one 5.25" external drive bay and additional space for one 3.5" drive. To install the drives, please follow the steps outlined in the sections below.

1. Remove all four drive cage retention screws
2. Carefully insert the 3.5" HDD into the drive tray, and secure the HDD by inserting six retention screws (three on each side)



3. Remove all four Drive bay cover retention screws



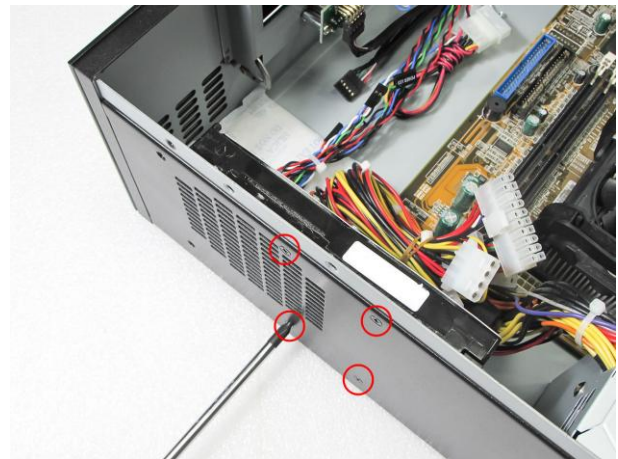
4. Remove the drive bay cover



5. Carefully insert the ODD drive into the drive tray, and secure the drive by inserting eight retention screws (four on each side) through the sides of the drive tray



6. For additional 3.5" drive, carefully place the drive to the inner right side of the chassis, and secure the drive with four retention screws



Installing the motherboard

To install the microATX motherboard, please follow the instructions below:

1. Remove all four drive cage retention screws



2. Lay the motherboard to the chassis and secure to the standoff below with the screws provided by the board manufacturer



- Different motherboard may have different Screw hole positions, please refer to their own User manual for details.
- Compatible motherboard models are available in Appendix B.

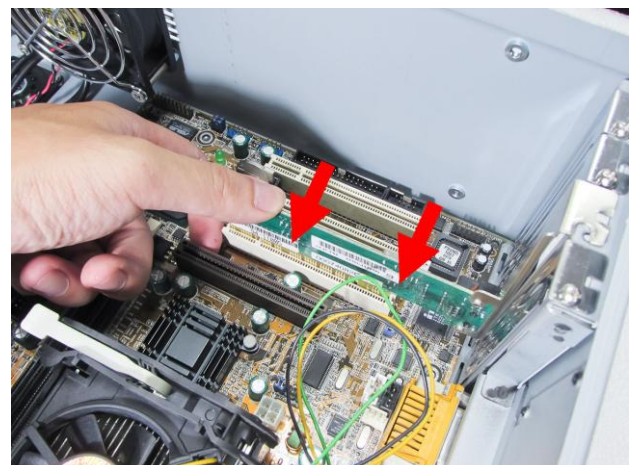
Installing the Expansion Card

To install the CPU card please follow the instructions below:

1. Remove the slot cover by removing the screw at top of the slot cover



2. Insert the Expansion card into the motherboard slot and card by the previously removed slot cover screw



- Please make sure to disconnect the Power Supply before installing the Expansion Card.
- Do not turn on power during the installation process
- Electrostatic Discharge (ESD) can damage electronic components. To prevent damage to your system, use a grounded wrist strap designed to prevent static discharge

Appendix A Power Supply Unit

Compatible Power Supply Units are listed in the table below:

Model number	Wattage	Type	Dimension (W x H x L)
SS-300SFD	300W	Single output	125 x 100 x 77mm
SS-350SFD	350W	Single output	125 x 100 x 77mm
FSP400-60GHS(85)	400W	Single output	125 x 100 x 63.5mm

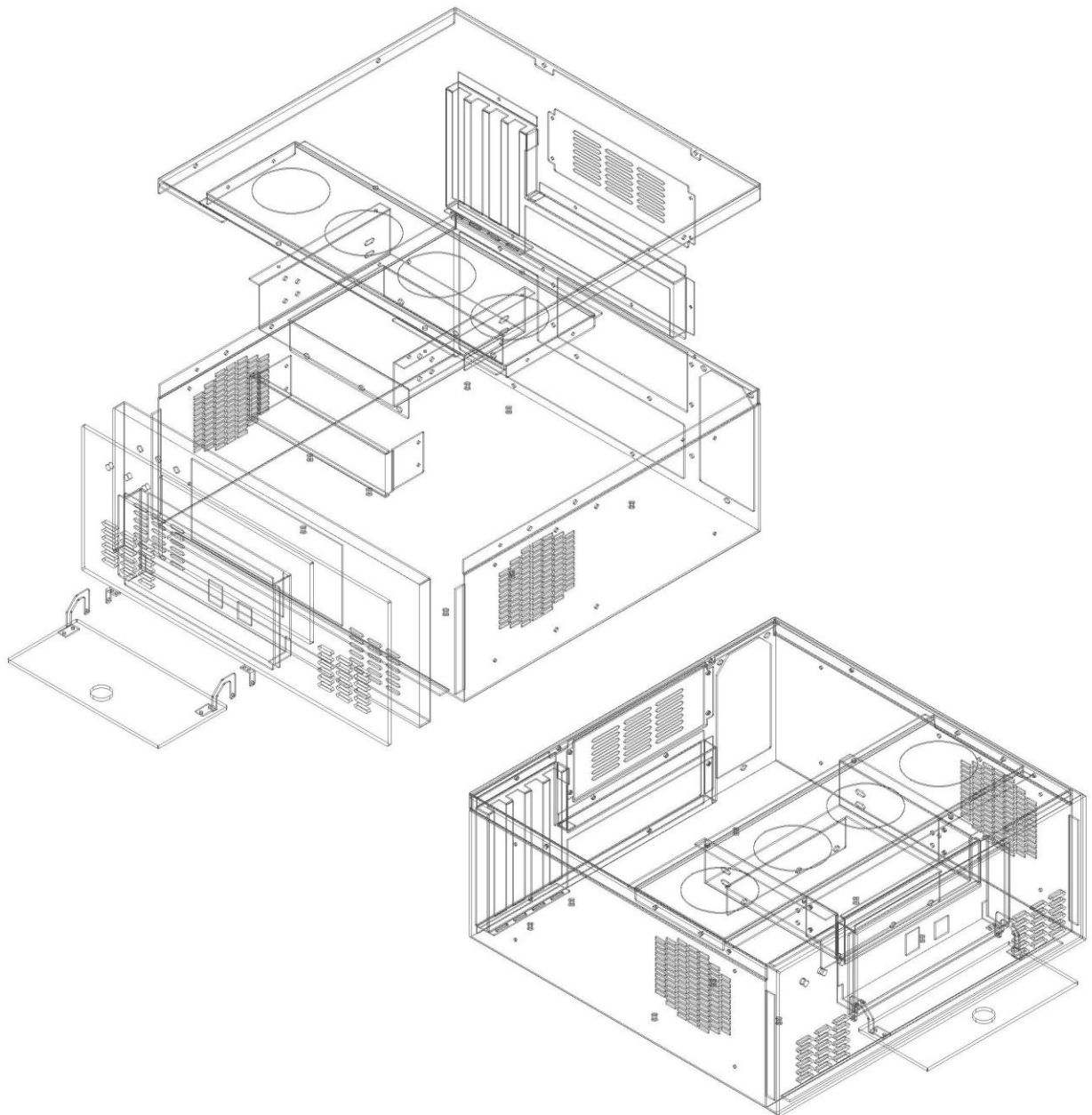
Appendix B Motherboard

Compatible AICSYS motherboards are listed in the table below:

Model number	Type	PCI	PCIe	ISA	PSU type
MBC-6508	Mini-ITX	N/A	1	N/A	ATX
MBC-6245	Mini-ITX	N/A	1	N/A	ATX
MBC-6243	Mini-ITX	N/A	1	N/A	ATX
MBC-6240	Mini-ITX	N/A	1	N/A	ATX
MBC-6230	Mini-ITX	1	N/A	N/A	ATX
MBC-4506	Mini-ITX	N/A	N/A	N/A	ATX
MBC-4503	Mini-ITX	1	N/A	N/A	ATX
MBC-6250	MicroATX	2	2	N/A	ATX
MBC-6603	MicroATX	2	2	N/A	ATX

Appendix C Exploded Diagram

As shown below:



**The Global Choice for
Premium Industrial Computer Products**

www.aicsys.com

